

CAP The Future of Infrared Windows

Who Says IR Windows Have To Be Round?

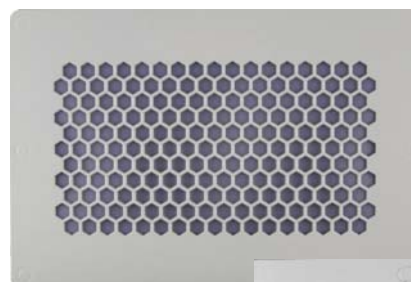
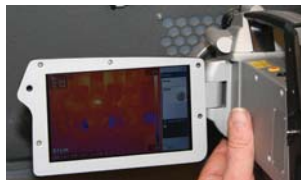
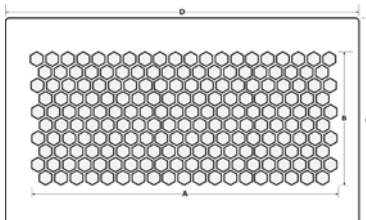
In the past, round, infrared (IR) window lenses were made from crystals in 2, 3, and 4 inch diameters. Larger sizes were not possible because the crystals would become too fragile. The “modulus of rupture” states that increasing the crystal diameter whilst maintaining the same thickness increases its fragility exponentially.

Our innovations in the materials used in the IRISS VPFR series, “The World’s Only Industrial-Grade Infrared Window”, combined with the inherent durability and transmission stability are the cornerstone of the IRISS CAP (Custom Application Product) series. The IRISS CAP series of IR windows now come in standard widths of 6, 12, and 24 inches and allow for more freedom to inspect multiple components through one infrared window, thus reducing the number of IR windows, their installation time and associated costs.

At IRISS, your safety and compliance with regulations and standards is always at the forefront of our research and development. The IRISS CAP series of IR windows offers innovation - creating products that are simply “safer by design”.



IRISS CAP series shown here with the VPFR shares the same patented lens solution



CAP-12 Shown



CAP-C-12 Shown Open

Specifications

Materials	
Panel and reinforcing grill	Specified to suit customer requirements
Optic	UL 746C compliant, IR transmissive polymer; -40°C (-40°F) to 325°C (617°F)

Dimensions

Model	Visual Window	IR Window	Overall Dimensions
CAP-6	NA	A=3.6, B=5.9	C=6.3, D=8.6
CAP-12	NA	A=9.3, B=5.0	C=12.0, D=8.1
CAP-24	NA	A=20.9, B=5.9	C=24.0, D=8.6

Model	Visual Window	IR Window	Overall Dimensions
CAP-C-6	NA	A=3.6, B=5.9	C=6.3, D=8.6
CAP-C-12	NA	A=9.3, B=5.0	C=12.0, D=8.1
CAP-C-24	NA	A=20.9, B=5.9	C=24.0, D=8.6

Dimensions shown in inches.