

PANELITE™ FLUORESCENT ENCLOSURE LIGHTS

PROTECTING YOUR ADVANTAGE



Versatile, compact lights easily install in any enclosure.



Low-profile lights for reliably illuminating your enclosure interiors.

Increase internal component visibility for easier maintenance and monitoring with Pentair Technical Products' Hoffman brand PANELITE™ Fluorescent Enclosure Lights. The compact lights mount out of the way for easy panel installation and fit easily into tight spaces where larger, traditional enclosure lights may not be suitable. Engineered specifically for quick installation in PROLINE® enclosures, these flexible lights can be easily mounted into any enclosure. Innovative terminal blocks on both ends of the light allow for easy wiring and ganging in series.

Mounting flexibility, easy installation and wiring.

Select between horizontal or vertical orientation. Versatile mounting clips provide easy access to mount hardware and allow the light to be positioned as desired without disassembly. Two-way clips are simply installed on the front or back of the light to allow for ideal orientation. PANELITE™ Fluorescent Enclosure Lights are UL and CSA certified.

ADVANTAGES AND FEATURES:

- **Low-profile design** fits into tight spaces
- **Terminal blocks** for easy wiring and gangability
- **Versatile mounting clips** allow for horizontal or vertical orientation
- **120 VAC, 50/60 Hz** operation
- **Plug-and-play** pre-wired connection sockets and optional cable accessories
- **15-, 18- and 28-in.** lengths available (bulb not included)
 - 15-inch accepts F6T5 bulb
 - 18-inch accepts F8T5 bulb
 - 28-inch accepts F14T5 bulb
- **Includes mounting hardware** for most enclosure installations (PROLINE, enclosure wall, unistrut)



Installation versatility

Plug-and-play connection and simple operation.

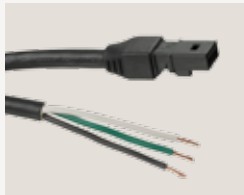
PANELITE™ Fluorescent Enclosure Lights feature pre-wired connection sockets on both ends of the light for use with Hoffman cable accessories, and optional terminals snap into the connection sockets to allow for greater variety in wiring methods. Lights are available in 15-, 18- and 28-in. lengths with the ability to gang up to five lights together; operate on 120 VAC, 50/60 Hz; and feature an On/Off switch incorporated into the light.

PANELITE™ FLUORESCENT ENCLOSURE LIGHTS



TECHNICAL INFORMATION

Catalog Number	Model	Description
LF120V15	19191	Fluorescent Light, 120V, 15 in.
LF120V18	19192	Fluorescent Light, 120V, 18 in.
LF120V28	19193	Fluorescent Light, 120V, 28 in.
LF120VCORD	19196	Power Cord, 120V, 72 in.
LPC72	19204	Power Cable w/ Lead, 72 in.
LDSWITCH18	19198	Dr Switch Cable, 18 in.
LDSWITCH72	19201	Dr Switch Cable, 72 in.
LGCABLE24	19202	Ganging Cable, 24 in.
LGCABLE48	19203	Ganging Cable, 48 in.
LGCABLE72	19225	Ganging Cable, 72 in.
ALFSWD	71260	Door Switch
PLFSWD	26949	PROLINE Door Switch



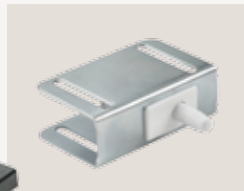
Power Cable w/Leads, 72 in.



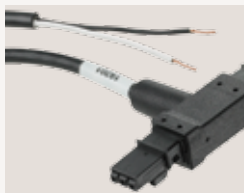
Power Cord, 120 VAC, 72 in.



Ganging Cables (24-, 48-, 72-in.)



Door Switches



Door Switch Cables

INDUSTRY STANDARDS:

- UL 508A Component Recognized; File no. E61997
- cUL Component Recognized per CSA C22.2 No. 14; File no. E61997
- CSA File no. 42186
- Maintains UL/CSA Type 4 and Type 12 rating when properly installed in a Hoffman enclosure.

POWER SUPPLY:

120 VAC, 50/60 Hz

CONSTRUCTION:

- Extruded aluminum center support
- Black composite end supports and mounting tabs
- Clear impact-resistant acrylic lens cover
- Includes: Light housing, two mounting tabs, two pre-wired connection sockets, two optional terminal blocks and enclosure attachment hardware (bulb not included)

ACCESSORIES:

- Ganging cables
- Power cables
- Door switches
- Door switch cables
- All accessories are provided with plug-and-play connectors

A VERSATILE SOLUTION FROM THE AUTHORITY IN ENCLOSURE LIGHTING

For 60 years, companies have relied on Pentair Technical Products Hoffman brand to protect their electrical and electronic components from challenging environments. The PANELITE family of enclosure lights provides ideal solutions for illuminating enclosure interiors in a broad range of applications. When your business depends on protecting your equipment, depend on Pentair Technical Products. To contact your local representative or learn more, visit hoffmanonline.com

Regional Headquarters

North America
Pentair Technical Products
2100 Hoffman Way
Anoka, Minnesota 55303-1745
U.S.A.
Tel: +1-763-421-2240

Brazil
Pentair Technical Products
(Taurus Metalurgica LTDA)
Rua Joao Marcon, 165
18550.000 – Centro
Boituva – SP
Tel: +55 15 3363 9100

Europe
Pentair Technical Products
Langenalber Straße 96-100
75334 Straubenhardt, Germany
Tel: +49 (0) 7082 794-0

China
Pentair Technical Products
21st Floor of Cloud Nine Plaza
No. 1118 West Yan'an Road
Changning District, Shanghai
P.R. China
Tel: +86 400 820 1133

For worldwide locations, see pentairtechnicalproducts.com

